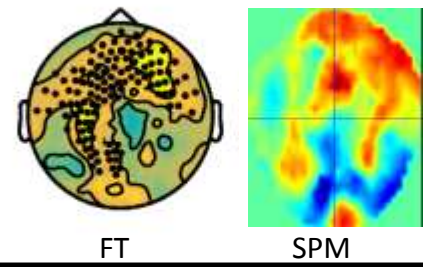
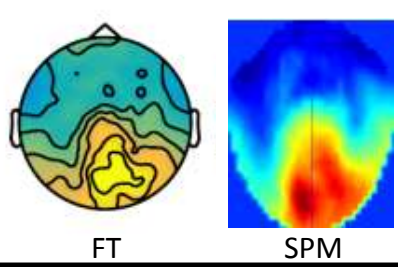
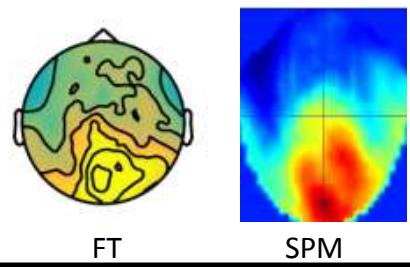


Scalp activity

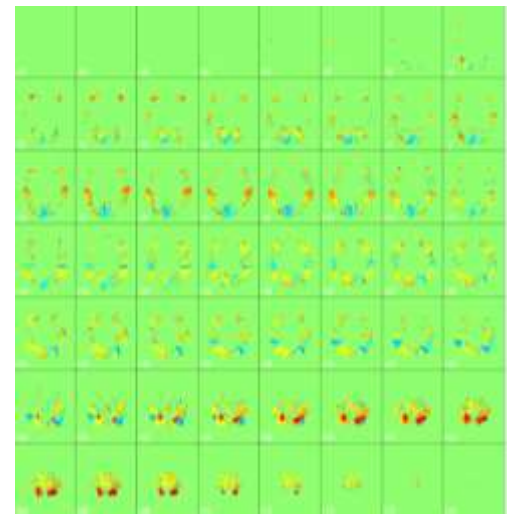
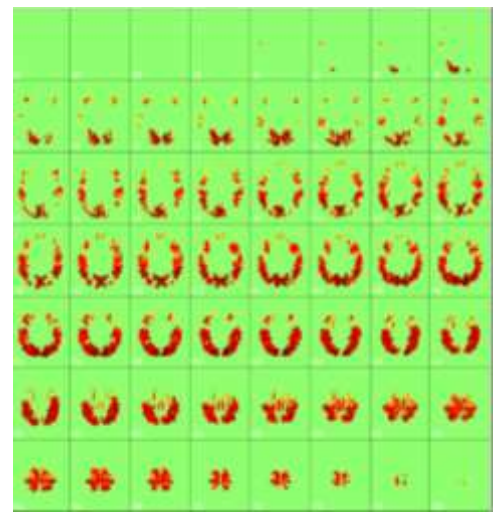
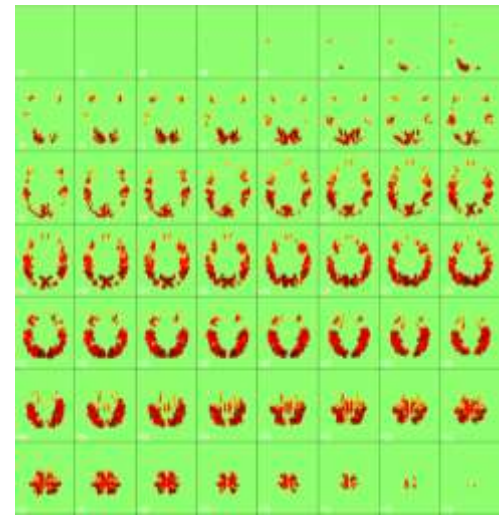
Cond A

Cond B

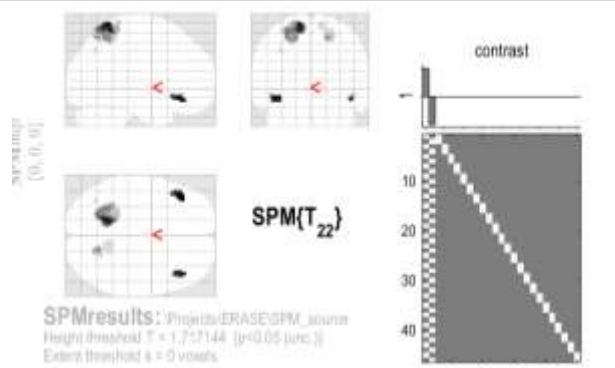
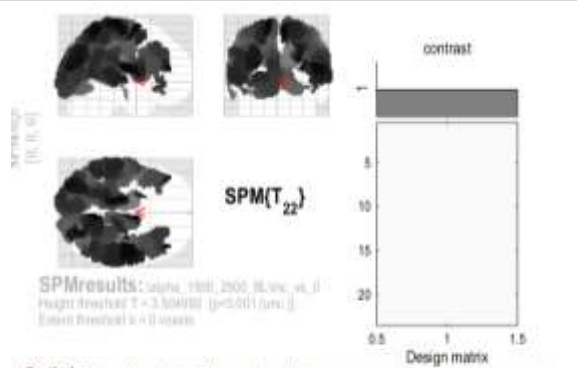
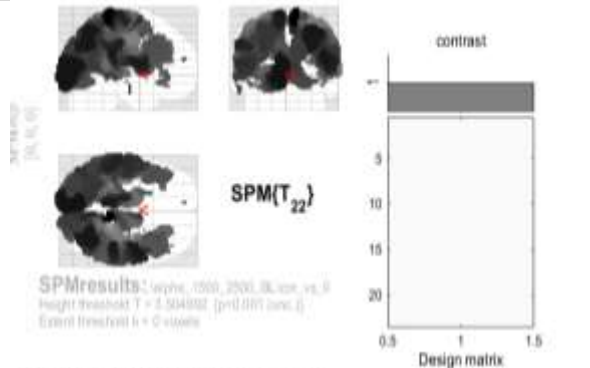
Contrast



Source activity



Source stats



Statistics: p -values adjusted for search volume

set-level		cluster-level				peak-level				mm mm mm			
p	k	P_{FWER}	q_{FDR}	k_c	$P_{cluster}$	P_{FWER}	q_{FDR}	T	(Z_c)	P_{peak}			
NaN	15	NaN	0.999	367340	426	0.000	-0.000	7.79	5.34	0.000	12	-45	79
			0.000	-0.000	7.24	7.13	0.000				6	-52	42
			0.000	-0.000	7.27	5.12	0.000				42	-14	14
NaN	0.999	1	0.999	0.000	-0.001	4.95	5.01	0.000			0	56	18
			0.999	1	0.999	0.000	-0.001	4.94	4.98	0.000	-64	-18	-10
NaN	0.999	12	0.994	0.000	-0.001	4.83	4.96	0.000			-62	-14	-14
NaN	0.999	2	0.999	0.000	-0.000	4.64	4.81	0.000			-8	-62	58

Statistics: p -values adjusted for search volume

set-level		cluster-level				peak-level				mm mm mm			
p	k	P_{FWER}	q_{FDR}	k_c	$P_{cluster}$	P_{FWER}	q_{FDR}	T	(Z_c)	P_{peak}			
NaN	8	NaN	0.999	345646	307	0.000	-0.000	7.60	5.31	0.000	6	0	42
			0.000	-0.000	7.74	5.22	0.000				6	-52	42
			0.000	-0.000	7.63	5.16	0.000				42	-14	14
NaN	0.999	41	0.990	0.000	-0.000	7.42	3.20	0.000			34	-80	12
			0.999	1	0.999	0.000	-0.000	7.41	5.20	0.000	94	-86	12
			0.999	1	0.999	0.000	-0.000	7.41	5.20	0.000	94	-86	12
NaN	0.999	1240	0.905	0.000	-0.000	7.39	5.18	0.000			-40	40	18

Statistics: p -values adjusted for search volume

set-level		cluster-level				peak-level				mm mm mm			
p	k	P_{FWER}	q_{FDR}	k_c	$P_{cluster}$	P_{FWER}	q_{FDR}	T	(Z_c)	P_{peak}			
0.420	5	0.925	0.985	34	0.952	0.986	0.994	2.55	2.37	0.009	-38	34	-14
		0.995	0.985	27	0.961	0.913	0.994	2.47	2.30	0.011	44	34	-14
		0.999	0.999	1500	0.710	0.319	0.994	1.88	1.79	0.506	40	32	-10